

System 2000 Conventional Lightning Protection – Smooth Weave System

ERICO offers the System 2000™ series of air terminals, down-conductors and fittings in accordance with National and International Standards such as Australian-AS1768, British-BS-EN62305, Singaporean-CP33, European-IEC and USA-NPFA 780.

Features

- Wide range of air terminals, bases, conductors, connectors and fasteners.
- Air termination components and fittings are available in copper and copper and aluminium alloys.
- Down conductors are available as smooth weave construction as well as copper, tinned copper and aluminium flat tapes.
- Computer aided design optimises the location of air terminals providing the most effective lightning protection coverage.
- Based on conventional design principles rolling sphere, cone of protection and mesh method as found in AS1768, BS-EN62305, IEC, CP33 and NFPA 780.
- Precision manufacturing ensures easy assembly and installation.

During design, installation and commissioning, our Engineers can provide on site and telephone assistance to contractors to ensure that the recommended protection measures are implemented to best practice standards. This assures that your lightning protection installation will provide your facility with the optimum level of protection.

Part Number	Description	
LPC225BST	AIR TERMINAL, COPPER, ½"x24"	COPPER
LPC227BST	AIR TERMINAL, COPPER, ½"x36"	
LPC30212	BASE, COPPER AIR TERMINAL, ½", UNIVERSAL MOUNT	
LPC122L250	CABLE, SMOOTH WEAVE, COPPER, TINNED, 250ft	
LPC801L	SADDLE, CABLE, ONE-HOLE, COPPER, TINNED	
LPC810L	SADDLE, CABLE, ADHESIVE OR SCREWED, COPPER, TINNED	
LPC502L	SPLICE, COPPER, PARALLEL	
LPA227ST	AIR TERMINAL, ALUMINIUM, ½"x36"	ALUMINIUM
LPA30212	BASE, ALUMINIUM AIR TERMINAL, ½", UNIVERSAL MOUNT	
LPA100500	CABLE, SMOOTH WEAVE, ALUMINIUM, 500ft	
LPA803	SADDLE, CABLE, ONE-HOLE, ALUMINIUM	
LPA810	SADDLE, CABLE, ADHESIVE OR SCREWED, ALUMINIUM	
LPA502	SPLICE, ALUMINIUM, PARRALLEL	
LPA598	CLAMP, INLINE SPLICE, BI-METALLIC	
LPP899GY	ADHESIVE, GREY, 10.3oz M-1 STRUCTURAL SEALANT-16PK	

- Notes:**
1. Refer to the attached product application drawings for further information.
 2. Part numbers listed are preferred product and generally stocked.
 3. This list does not represent the entire product range available, please refer to your local ERICO representative for more product information.

WARNING

ERICO products shall be installed and used only as indicated in ERICO's product instruction sheets and training materials. Instruction sheets are available at www.erico.com and from your ERICO customer service representative. Improper installation, misuse, misapplication or other failure to completely follow ERICO's instructions and warnings may cause product malfunction, property damage, serious bodily injury and death.

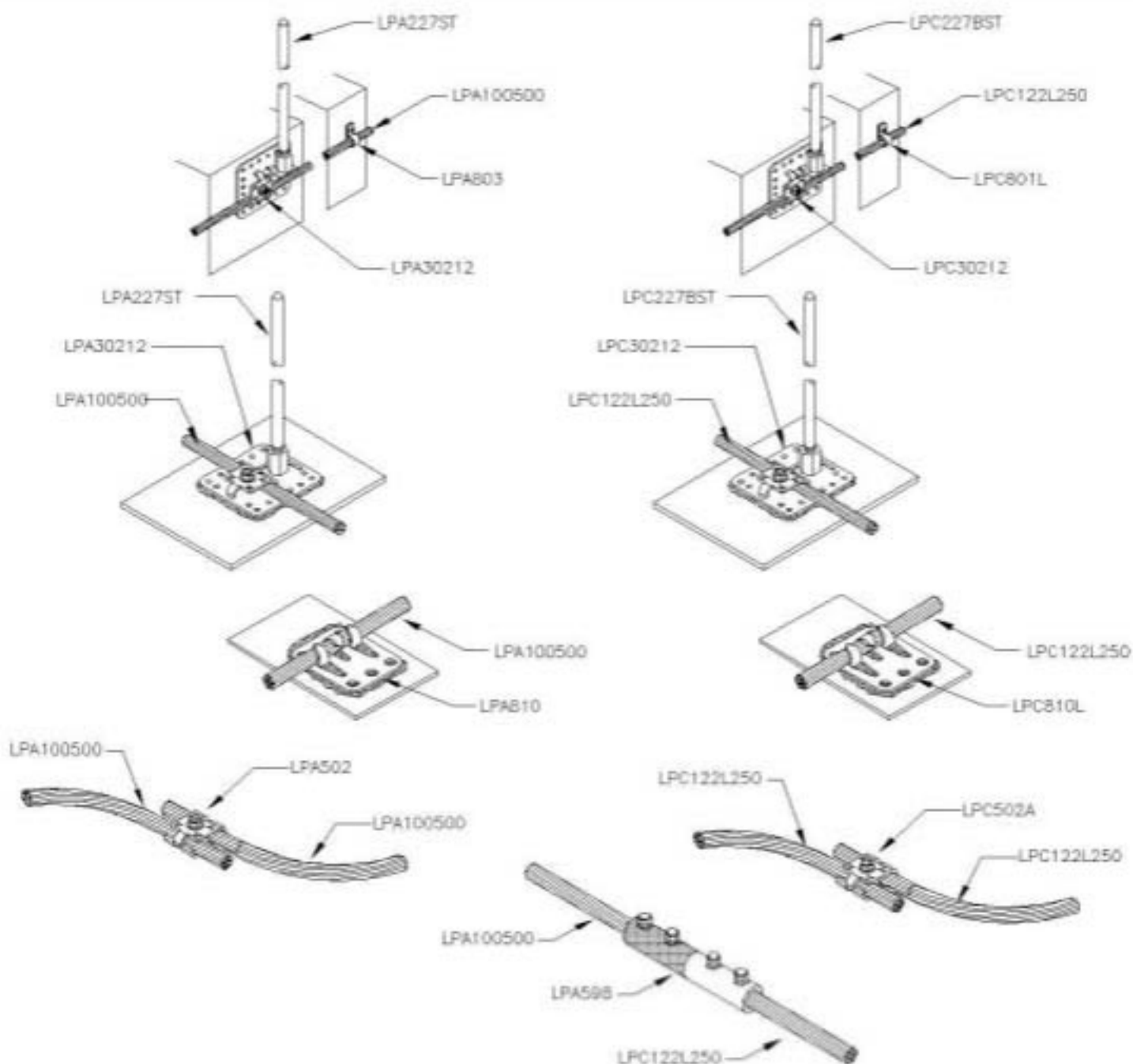
Copyright ©2008 ERICO International Corporation. All rights reserved.

CADDY, CADWELD, CRITEC, ERICO, ERIFLEX, ERITECH, and LENTON are registered trademarks of ERICO International Corporation.




www.erico.com

System 2000 Conventional Lightning Protection – Smooth Weave System



WARNING

ERICO products shall be installed and used only as indicated in ERICO's product instruction sheets and training materials. Instruction sheets are available at www.erico.com and from your ERICO customer service representative. Improper installation, misuse, misapplication or other failure to completely follow ERICO's instructions and warnings may cause product malfunction, property damage, serious bodily injury and death.

Copyright ©2008 ERICO International Corporation. All rights reserved.

CADDY, CADWELD, CRITEC, ERICO, ERIFLEX, ERITECH, and LENTON are registered trademarks of ERICO International Corporation.

